



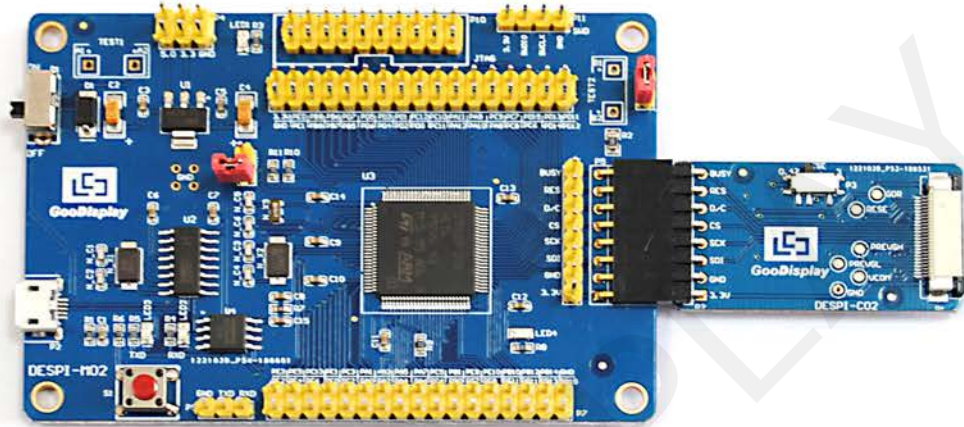
Development Kit for Epaper Display

DESPI



Dalian Good Display Co., Ltd.

Product Specifications



Customer	Standard
Description	Development Kit for Epaper Display
Model Name	DESPI
Date	2018/07/06
Revision	2.0

	Design Engineering		
	Approval	Check	Design
			

No.17 Gonghua Street, Shahekou District, Dalian 116021 China

Tel: +86-411-84619565 Fax: +86-411-84619585-810

Email: info@good-display.com

Website: www.good-display.com

Content

1. Overview	4
2. Mechanical Specifications.....	4
3. Functions.....	5
4. JTAG Simulator (Optional).....	8

GOOD DISPLAY

1. Overview

This Development Kit designed for SPI E-paper Display aims to help users to begin constructing our e-paper display with provided source code to create more differentiated solutions. It supports driving Good Display's black-white E-paper Display and three-color (black, white and red/Yellow) Good Display's E-paper Display: 1.54", 2.04", 2.13", 2.6", 2.7", 2.9", 3.71", 4.2", 5.83" and 7.5".

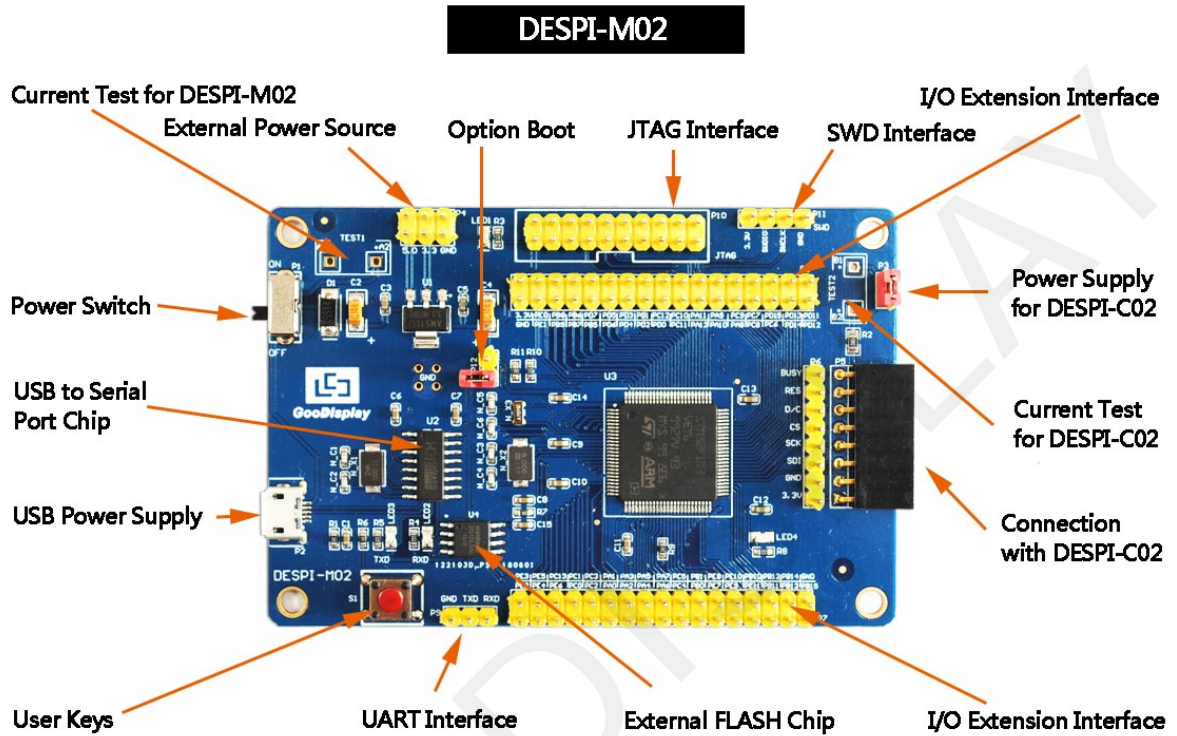
And it is added the functions of USB serial port and LED indicator light ect. It also supports being updated by computer directly.

DESPI Development Kit consists of the development board DESPI-M02 and the pinboard DESPI-C02.

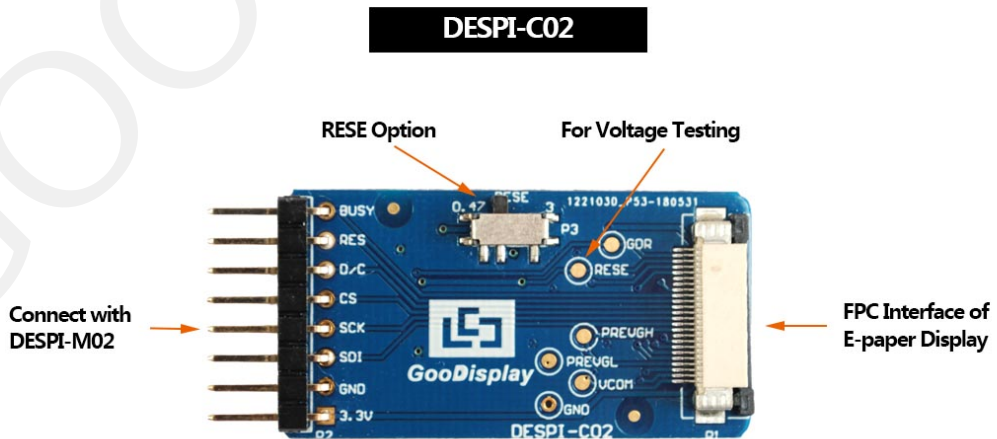
2. Mechanical Specifications

Parameter	Specification
Model	DESPI
MCU	STM32
Dimension	90mmx60mm (DESPI-M02) 41mmx22mm (DESPI-C02)
Power Interface	USB Interface
Sample Code	Available (please contact sales)
Operating Temp.	-20°C ~+70°C
Main Function	EPD driving
Additional Function	USB to serial port, indicator light 、 keys、 current detection and so on.

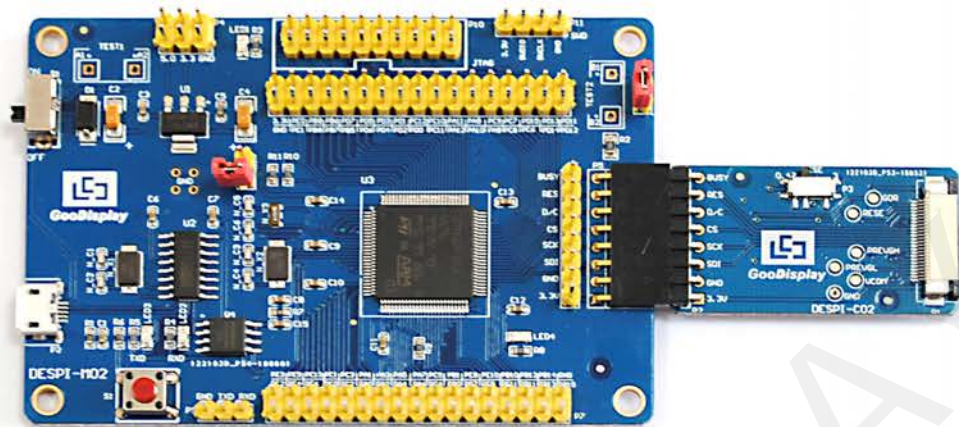
3. Functions



Pic.01 Main Board



Pic.02 2Connector Board



Pic. 03 Demo Board

3.1 Power Supply

Input voltage of Demo Board is DC5V, and the power interface is USB Interface.

3.2 LED indicator light

One indicator light reserved for developing.

3.3 Communication

One USB to serial port reserved for transmission .You should install the driver program CH340 to use it.

3.4 I/O Port Extension

I/O port of STM32 has been led out for developing.

3.5 Current Test

The demo kit supports the current test of the main board DESPI-M02 and the connector board DESPI-C02.

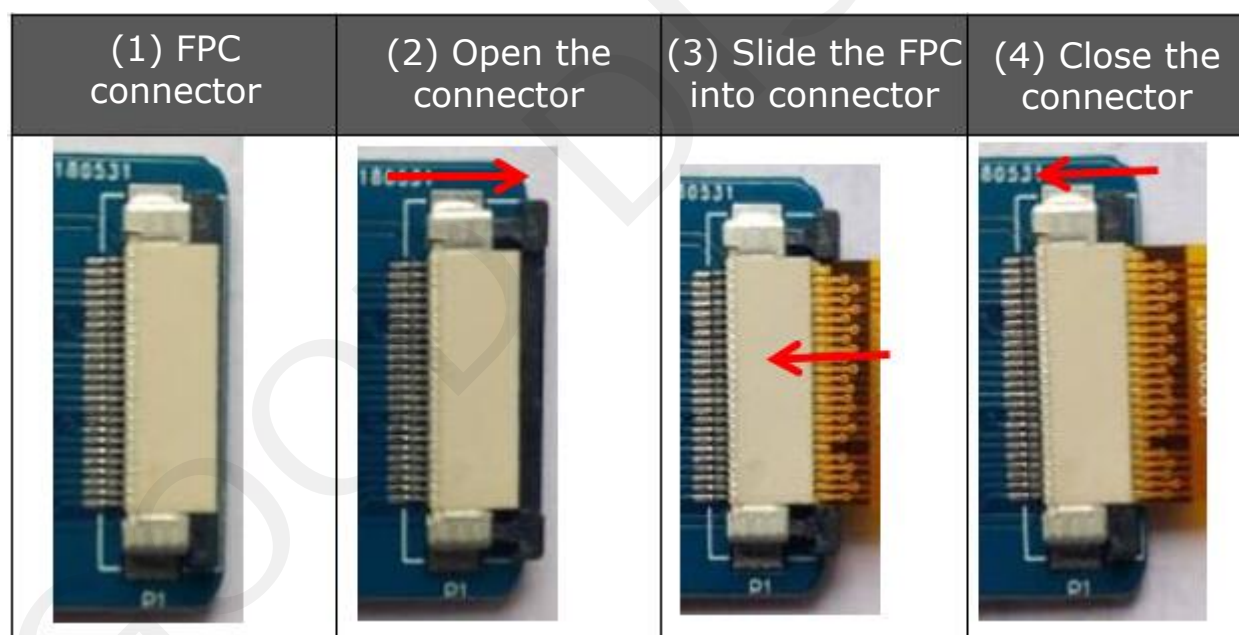
- 1) Test for DESPI-M02: Power off and make series connection between ampere meter and TEST1.
- 2) Test for DESPI-C02: Power on and take off the short circuit plug P3 then make series connection between ampere meter and TEST2. After accomplishing test, put on the short circuit plug 3.

3.6 Download

The demo can support 3 modes of download : TAG、SWD、UART.

TIPS: When using UART to download program, you need to use a plug to short circuit P12, and then use FlyMcu software to choose corresponding with Hex file and download it. Be sure to remove the short circuit plug for P12 after the download is complete, or program won't be able to work.

3.7 Connect E-paper Display to Demo Board



3.8 The connector board DESPI- C02

It can refresh total 10 sizes of Good Display's E-paper Display such as 1.54", 2.04", 2.13", 2.6", 2.7", 2.9", 3.71", 4.2", 5.83", 7.5".

The e-paper display can only be refreshed by connecting the DESPI-C02 to the main board.

RESE is set to 0.47Ω position:

1.54 inch: GDEW0154T8、 GDEW0154Z17、 GDEW0154Z04
2.13 inch: GDEW0213T5、 GDEW0213Z16
2.6 inch: GDEW026T0、 GDEW026Z39
2.7 inch: GDEW027W3、 GDEW027C44
2.9 inch: GDEW029T5、 GDEW029Z10
3.71 inch: GDEW0371W7
4.2 inch: GDEW042T2、 GDEW042Z15
5.83 inch: GDEW0583Z21
7.5 inch: GDEW075Z09

RESE is set to 3Ω position :

1.54 inch: GDEH0154D27、 GDEP015OC1
2.04 inch: GDE021A1
2.13 inch: GDEH0213B1、 GDEH0213D30LT
2.9 inch: GDEH029A1、 GDEH029D56LT
5.83 inch : GDEW0583T7
7.5 inch: GDEW075T8

3.9 Keys

Reserved button function for user developing.

4. JTAG Simulator (Optional)

There is no brand or model requirement when the user selects the emulator, as long as it has the download function.