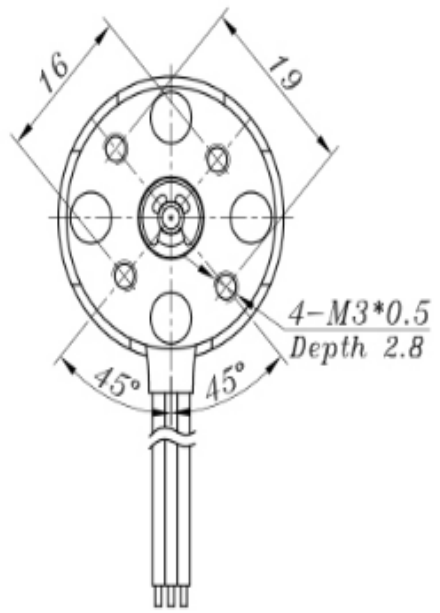
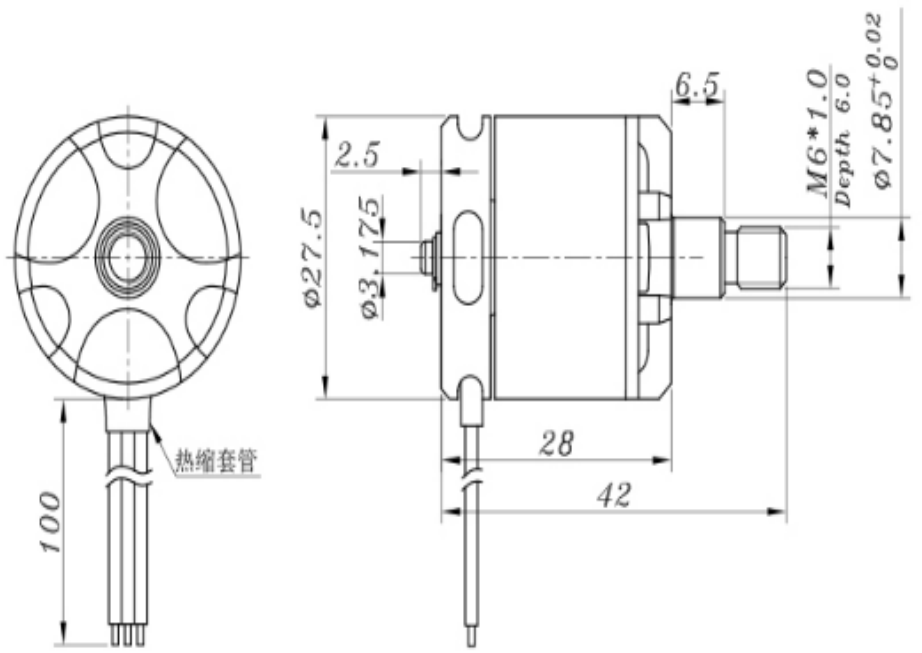


Specifications		X2212-II					
Stator Diameter		22mm					定子外径
Stator Thickness		12mm					定子厚度
No. of Stator Slots		12					定子槽数
No. of Rotor Poles		14					转子极数
Motor Kv		980					电机KV
NO-Load Current (A/10V)		0.6A					空载电流
Motor Resistance		104mΩ					电机电阻
Max Continuous Current		21A/30s					最大连续电流
Max Continuous Power		355w					最大连续功率
Weight		61g					重量
Rotor Diameter		27.5mm					转子直径
Body Length		44.5mm					电机长度
Max Lipo Cell		3-4S					支持锂电节数
ESC		30A					建议使用电调
Recommend Prop (inch)				EOLO 1038自锁桨 9450自锁桨		推荐螺旋桨规格	
Prop (inch)	Volts (V)	Amps (A)	Thrust (g)	Watts (W)	Efficiency (%)	RPM	全油门负载温度
EOLO 1038自锁桨	11.1	0.9	100	9.99	10.01	3243	
		2	200	22.2	9.01	4441	
		3.3	300	36.63	8.19	5431	
		4.6	400	51.06	7.83	6214	
		6.1	500	67.71	7.38	6848	
		7.7	600	85.47	7.02	7522	
		9.6	700	106.56	6.57	8155	
		11.2	805	124.32	6.48	8506	
	12.5	0.8	100	10	10.00	3224	
		1.8	200	22.5	8.89	4423	
		3	300	37.5	8.00	5413	
		4.3	400	53.75	7.44	6207	
		5.6	500	70	7.14	6871	
		7.1	600	88.75	6.76	7526	
		8.7	700	108.75	6.44	8137	
		10.5	800	131.25	6.10	8664	
	14.8	13.3	960	166.25	5.77	9330	
		0.7	100	10.36	9.65	3206	
		1.6	200	23.68	8.45	4414	
		2.6	300	38.48	7.80	5421	
		3.7	400	54.76	7.30	6210	
		4.9	500	72.52	6.89	6881	
		6.2	600	91.76	6.54	7510	
		7.6	700	112.48	6.22	8162	
		9.1	800	134.68	5.94	8675	
		10.7	900	158.36	5.68	9186	

		12.5	1000	185	5.41	9676	
		17.1	1260	253.08	4.98	10658	
	16.8	0.6	100	10.08	9.92	3208	
		1.4	200	23.52	8.50	4410	
		2.3	300	38.64	7.76	5427	
		3.3	400	55.44	7.22	6211	
		4.4	500	73.92	6.76	6859	
		5.6	600	94.08	6.38	7531	
		7	700	117.6	5.95	8140	
		8.4	800	141.12	5.67	8669	
		9.9	900	166.32	5.41	9190	
		11.3	1000	189.84	5.27	9672	
		14.7	1200	246.96	4.86	10597	
		20.5	1520	344.4	4.41	11533	
2min 85°C							
9450自锁浆	11.1	0.9	100	9.99	10.01	3010	
		2	200	22.2	9.01	4153	
		3.4	300	37.74	7.95	5028	
		5	400	55.5	7.21	5814	
		6.6	500	73.26	6.83	6437	
		8.5	600	94.35	6.36	7025	
		10.5	700	116.55	6.01	7581	
		12.4	800	137.64	5.81	8211	
	12.5	0.8	100	10	10.00	3019	
		1.9	200	23.75	8.42	4155	
		3.1	300	38.75	7.74	5030	
		4.7	400	58.75	6.81	5820	
		6	500	75	6.67	6441	
		7.7	600	96.25	6.23	7021	
		9.5	700	118.75	5.89	7584	
		11.4	800	142.5	5.61	8101	
	14.7	950	183.75	5.17	8927		
	14.8	0.7	100	10.36	9.65	3015	
		1.6	200	23.68	8.45	4154	
		2.7	300	39.96	7.51	5024	
		3.9	400	57.72	6.93	5827	
		5.3	500	78.44	6.37	6430	
		6.8	600	100.64	5.96	7018	
		8.4	700	124.32	5.63	7541	
		10.1	800	149.48	5.35	8012	
		11.9	900	176.12	5.11	8615	
		13.8	1000	204.24	4.90	9047	
	18.9	1250	279.72	4.47	10121		
		0.7	100	11.76	8.50	3011	
		1.5	200	25.2	7.94	4150	
		2.5	300	42	7.14	5014	

16.8	3.6	400	60.48	6.61	5831	1min 80°C
	4.8	500	80.64	6.20	6428	
	6.1	600	102.48	5.85	7011	
	7.7	700	129.36	5.41	7549	
	9.2	800	154.56	5.18	8017	
	10.8	900	181.44	4.96	8628	
	12.6	1000	211.68	4.72	9051	
	16.4	1200	275.52	4.36	9952	
	22.6	1510	379.68	3.98	11350	



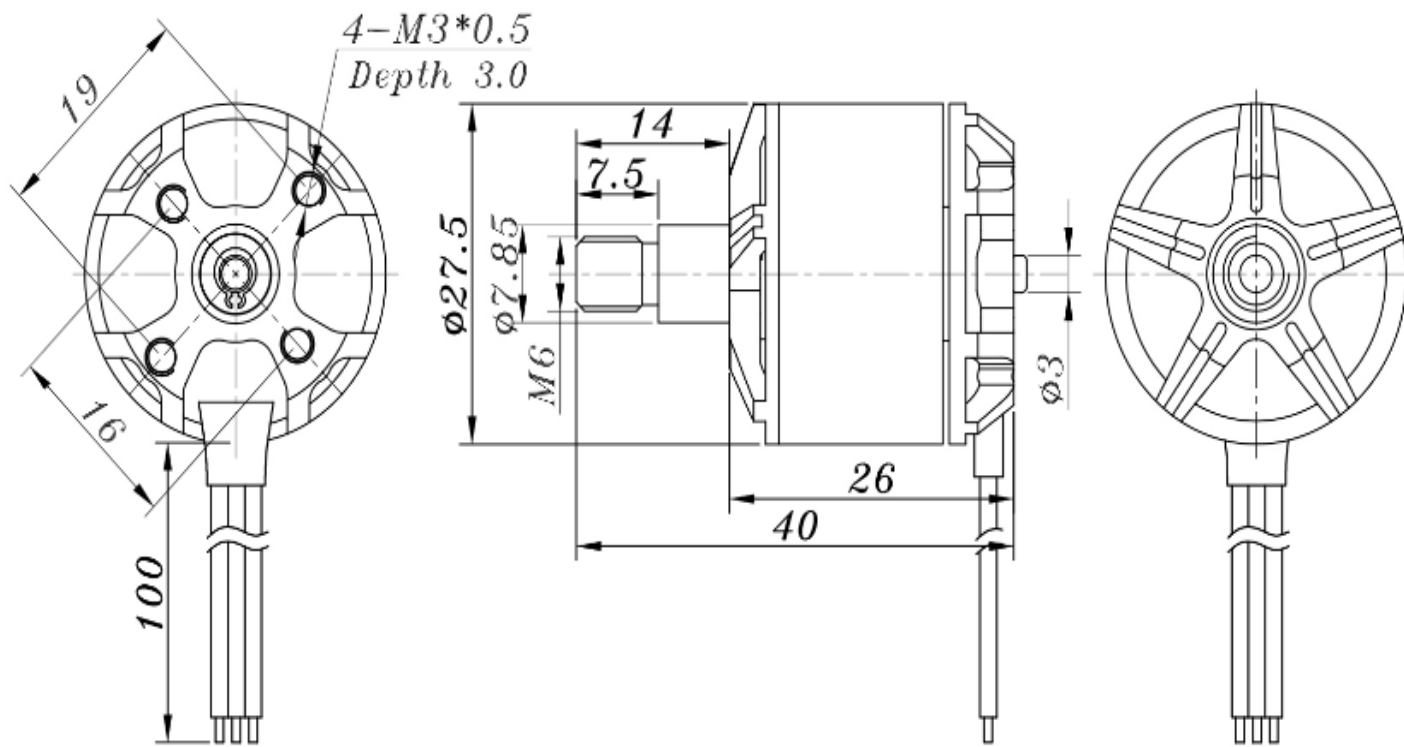
Specifications	A2212	
Stator Diameter	22mm	定子外径
Stator Thickness	12mm	定子厚度
No. of Stator Slots	12	定子槽数
No. of Rotor Poles	14	转子极数
Motor Kv	980	电机KV
NO-Load Current (A/10V)	0.6A	空载电流
Motor Resistance	142mΩ	电机电阻
Max Continuous Current	18A/30s	最大连续电流
Max Continuous Power	310w	最大连续功率
Weight	55g	重量
Rotor Diameter	27.5mm	转子直径
Body Length	41.2mm	电机长度
Max Lipo Cell	3-4S	支持锂电节数
ESC	30A	建议使用电调

Recommend Prop (inch)				EOLO 1038自锁桨 · 9450自锁桨			推荐螺旋桨规格
-----------------------	--	--	--	------------------------	--	--	---------

Prop (inch)	Volts (V)	Amps (A)	Thrust (g)	Watts (W)	Efficiency (%)	RPM	全油门负载温度
EOLO 1038自锁桨	11.1	1	100	11.1	9.01	3228	
		2.1	200	23.31	8.58	4437	
		3.4	300	37.74	7.95	5375	
		4.8	400	53.28	7.51	6217	
		6.3	500	69.93	7.15	6883	
		8.1	600	89.91	6.67	7546	
		10.2	720	113.22	6.36	8098	
	12.5	0.9	100	11.25	8.89	3192	
		1.9	200	23.75	8.42	4403	
		3.1	300	38.75	7.74	5413	
		4.3	400	53.75	7.44	6235	
		5.8	500	72.5	6.90	6886	
		7.3	600	91.25	6.58	7514	
		9	700	112.5	6.22	8090	
14.8	12.1	870	151.25	5.75	8886		
	0.8	100	11.84	8.45	3220		
	1.7	200	25.16	7.95	4409		
	2.7	300	39.96	7.51	5403		
	3.9	400	57.72	6.93	6229		
	5.1	500	75.48	6.62	6874		
	6.5	600	96.2	6.24	7519		
	8	700	118.4	5.91	8061		
	9.6	800	142.08	5.63	8662		
	11.3	900	167.24	5.38	9193		
13.3	1000	196.84	5.08	9621			
15	1110	222	5.00	10042			

	16.8	0.7	100	11.76	8.50	3184	
		1.5	200	25.2	7.94	4406	
		2.5	300	42	7.14	5426	
		3.5	400	58.8	6.80	6195	
		4.7	500	78.96	6.33	6813	
		6	600	100.8	5.95	7521	
		7.3	700	122.64	5.71	8075	
		8.7	800	146.16	5.47	8657	
		10.4	900	174.72	5.15	9201	
		12.1	1000	203.28	4.92	9627	
		16	1200	268.8	4.46	10627	
17.8	1320	299.04	4.41	11004	1min30s 90°C		
9450自锁桨	11.1	1	100	11.1	9.01	3001	
		2.1	200	23.31	8.58	4138	
		3.5	300	38.85	7.72	5010	
		5.1	400	56.61	7.07	5794	
		6.9	500	76.59	6.53	6425	
		8.9	600	98.79	6.07	7011	
		11.2	710	124.32	5.71	7693	
	12.5	0.9	100	11.25	8.89	3005	
		2	200	25	8.00	4140	
		3.2	300	40	7.50	5011	
		4.7	400	58.75	6.81	5792	
		6.3	500	78.75	6.35	6430	
		8.2	600	102.5	5.85	7014	
		10.1	700	126.25	5.54	7581	
	13.3	850	166.25	5.11	8347		
	14.8	0.8	100	11.84	8.45	3009	
		1.7	200	25.16	7.95	4145	
		2.9	300	42.92	6.99	5017	
		4.2	400	62.16	6.44	5798	
		5.6	500	82.88	6.03	6427	
		7.2	600	106.56	5.63	7019	
		8.8	700	130.24	5.37	7584	
		10.8	800	159.84	5.01	8010	
		12.9	900	190.92	4.71	8611	
	16.5	1090	244.2	4.46	9533		
	16.8	0.7	100	11.76	8.50	3011	
		1.6	200	26.88	7.44	4142	
		2.6	300	43.68	6.87	5016	
		3.8	400	63.84	6.27	5789	
		5	500	84	5.95	6434	
		6.6	600	110.88	5.41	7013	
		8.1	700	136.08	5.14	7588	
9.9		800	166.32	4.81	8015		

11.7	900	196.56	4.58	8616	
13.8	1000	231.84	4.31	9052	
18.1	1200	304.08	3.95	9947	
19.7	1300	330.96	3.93	10370	1min 70°C



A2212帶杆